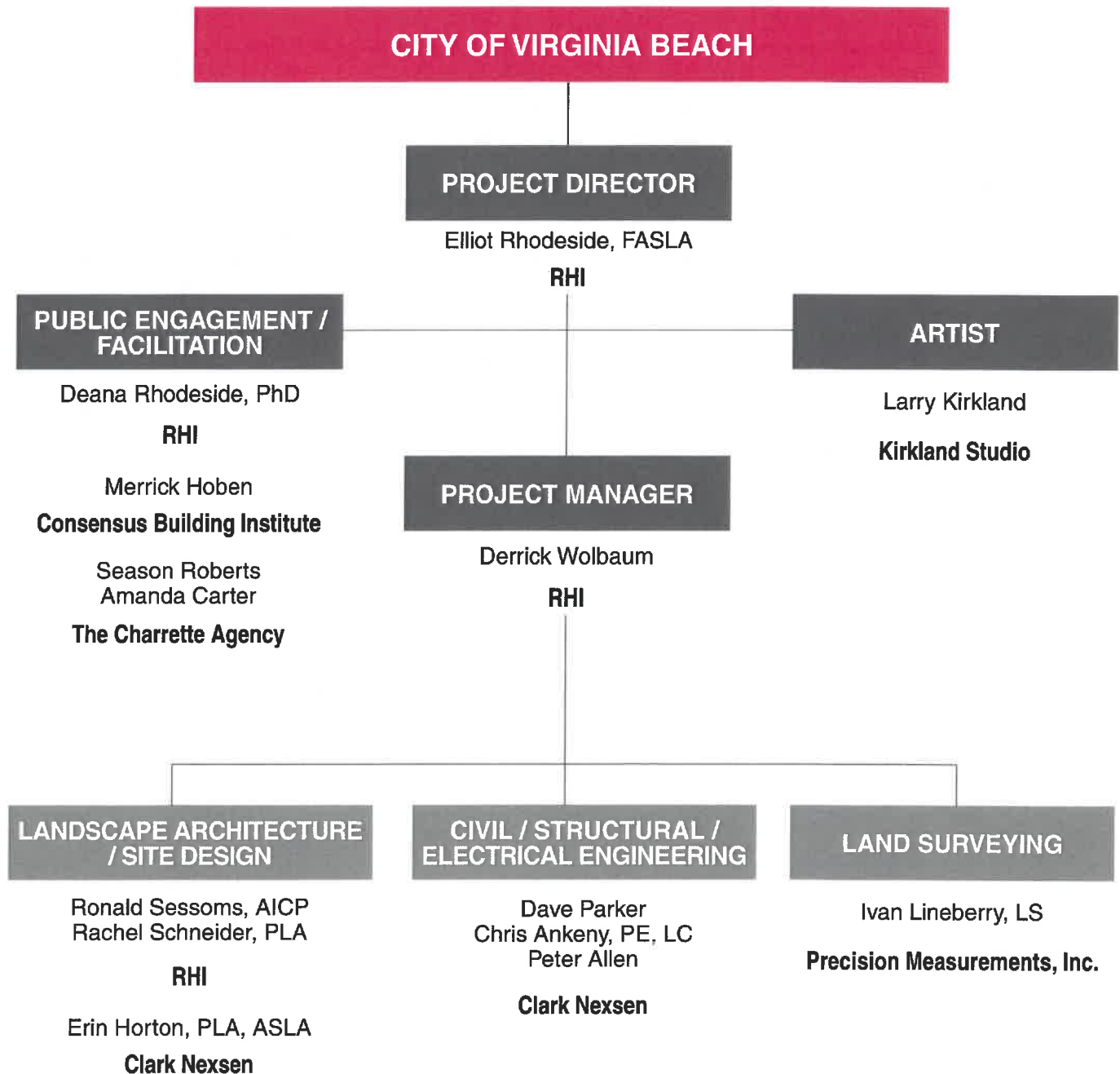


Team Composition and Credentials



With an acclaimed portfolio focused on sustaining and celebrating the natural and built environments, and a staff of 30 professionals, RHI has directed many of the country's most compelling projects in planning, landscape architecture, and urban design. For 35 years, our diverse expertise has helped restore historic and urban parks, preserve community green spaces, revitalize urban districts, and create engaging public amenities for people of all ages to enjoy.

AN INSPIRED PARTNERSHIP

RHI, a Small, Woman-Owned business, was established in Alexandria, Virginia in 1986 as a partnership of Dr. Deana Rhodeside, Faye Harwell, FASLA, and Elliot Rhodeside, FASLA. Nationally recognized as leaders in the profession, the three partners bring distinct, complementary skills and broad-ranging experience to the firm's award-winning, multidisciplinary firm. In order to accommodate an expanding practice, the firm opened an office in New York City in 2008.

Together, these accomplished partners direct a creative and highly skilled multi-disciplinary team of planning and design professionals on projects throughout the U.S. and overseas. Dr. Rhodeside, Ms. Harwell, and Mr. Rhodeside are closely involved with each of the firm's projects, and consistently foster a collaborative process involving staff, other project consultants, clients, and stakeholders.

KNOWLEDGE, SKILL, AND DISTINCTIVE EXPERIENCE

RHI offers comprehensive expertise and a progressive, insightful approach to urban planning and design. Our clients include government agencies, corporations, real estate developers, design firms, and private property owners. Services include:

- Landscape architecture
- Site planning and design
- Master planning
- Urban planning and design
- Environmental planning and impact assessment
- Waterfront planning
- Historic landscape architecture and preservation
- Community revitalization
- Programming
- Community outreach and engagement
- Construction documentation, specifications, and cost estimating
- Construction inspection and administration

KIRKLAND STUDIO

ARTIST

Larry Kirkland has collaborated with design professionals and community leaders creating meaningful places throughout the United States including works for The Brown University Alpert School of Medicine; Pennsylvania Station, New York City; The University of Iowa Children's Hospital; The California Museum of Science, Los Angeles; the Federal Courthouse, Los Cruzes, the American Red Cross Headquarters, and the National Academies of Science, both in Washington DC. The newest collaboration with PWL Landscape Architects is a waterfront park on the Columbia River in Vancouver, Washington, to be completed in 2018.

During the past 30 years he has been engaged by communities to create specific Memorials to honor individuals, communities and events. These include The Civil Rights Garden in Atlantic City, The American Veterans Disabled for Life Memorial in Washington DC, the Southwestern Pennsylvania World War II Memorial and the National Center for Civil and Human Rights in Atlanta. He is currently creating a Peace Corps Commemorative Park adjacent to the US Capitol.

Outside the USA he has installations including: Putra World Trade Center, Kuala Lumpur, Malaysia, Hong Kong Central Station and Kansai International Airport, Osaka, Japan.

Mr. Kirkland has extensive experience on public art selection and review panels. He has written art master plans for the City of Denver Civic Center Office Building, the Port of Vancouver, Washington, and the National Academy of Sciences. As a member of the master plan design team for New Jersey Transit 45 mile Hudson-Bergen Line, Kirkland helped establish an innovative arts inclusion for emerging and local artists, designers and craftsmen.

Kirkland has been a recipient of a Fellowship from the National Endowment for the Arts and awarded Alumni of the Year from his alma mater, Oregon State University. He is a member of the GSA Design Excellence Peer review panel and served for six years as a council member of the Public Art Network, Americans for the Arts.