

A photograph of a park at dusk. In the foreground, a person is walking away from the camera on a path. To the left, a fountain sprays water upwards, illuminated from below. In the background, there is a large tent with a blue and white striped canopy. The sky is a deep blue with some clouds, and the trees are silhouetted against the light. The overall mood is serene and reflective.

VIRGINIA BEACH
**5/31 REMEMBRANCE
MEMORIAL**

Rhodeside Harwell / Larry Kirkland Studio

Contents

INTRODUCTION

Part 1: **MEMORIAL**

Part 2: **DESIGN DETAILS**

Part 3: **COST ESTIMATE**

Part 4: **ADDITIONAL INFORMATION**

Part 5: **DESIGN TEAM**

INTRODUCTION

The 2019 tragedy that overwhelmed Virginia Beach and shocked the nation is still resounding with both City residents and staff. In remembrance of this heartbreaking event, the City plans to commission the 5/31 Memorial to honor those who were killed and wounded, and to help heal the pain of families, friends and co-workers. The site selected by the City is beautiful and the Memorial goals and program are clear. Our design creates a welcoming and graceful sequence of places as one travels through the forest and around the pond that culminates in the heart of the Memorial: a peaceful V-shaped "room" that is framed by twelve engraved glass panels with water cascading down the surfaces on two sides honoring each of the twelve victims. This room becomes a sanctuary for families, friends and other visitors -- a place of calm reflection and remembrance. At the tip of the "V", the Memorial focuses out toward the pond with a 25' tall jet of water which is visible throughout the site and from the adjacent streetscape. Our team is committed to working closely with the Memorial Committee, the families and others to evolve the design and build an evocative Memorial of beauty, simplicity and elegance, a place of reflection, remembrance and peace.

THE VISION



SITE PLAN

1. Remembrance Wall
2. Entry Walk
3. Remembrance Walk
4. Woodland Garden
5. The Memorial
6. Memorial Jet
7. Remembrance Garden
8. Multi-Purpose Area
9. Pond Walk
10. Parking Lot
11. Bus Stop



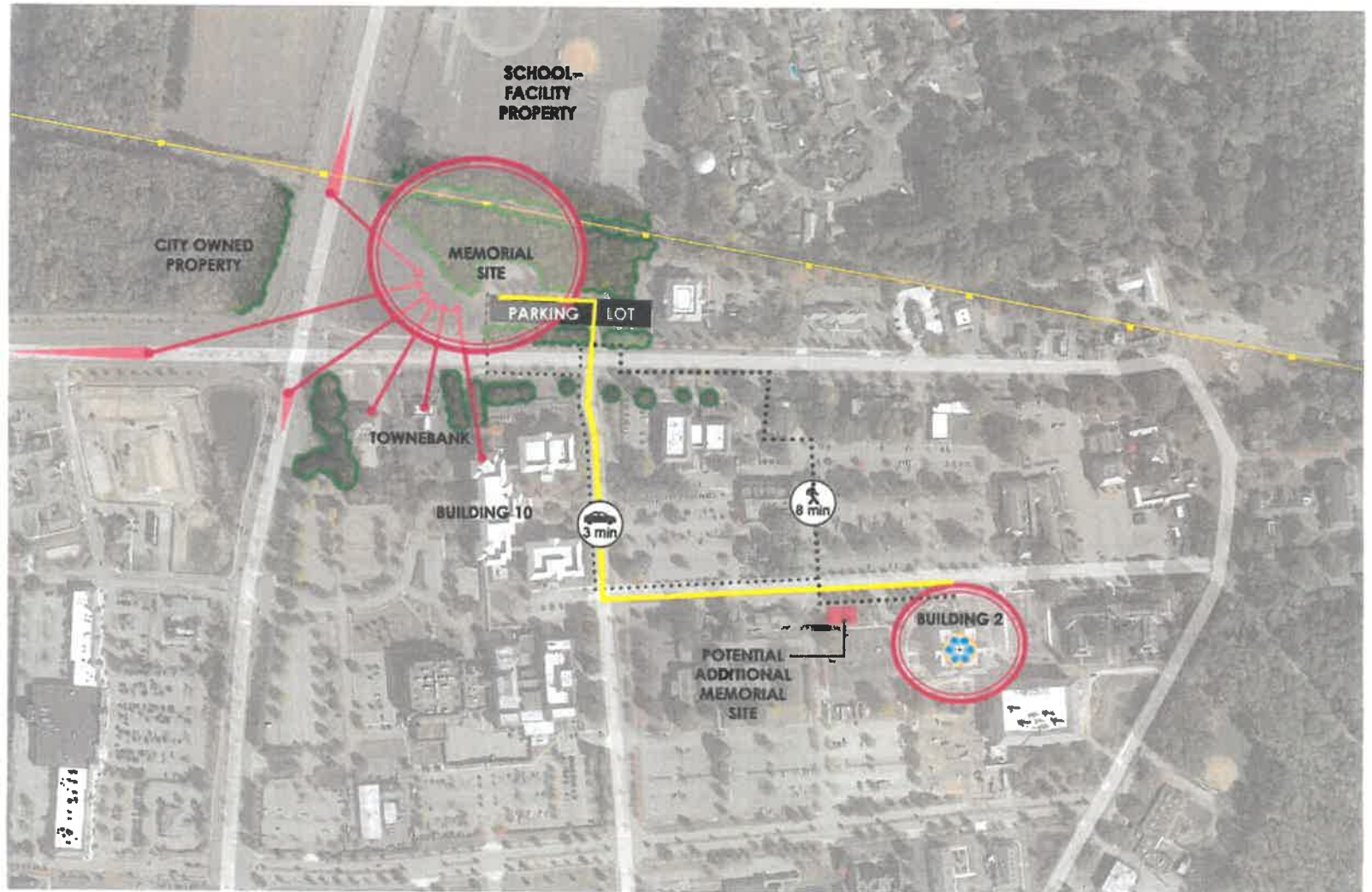
**PART 1:
THE MEMORIAL**

MEMORIAL SITE



MEMORIAL SITE CONTEXT

-  Key Sites
-  Building 2
-  Pedestrian Path
-  Vehicular Path
-  Overhead Utility
-  Stationary Views Towards Memorial Site
-  View from Vehicles to Memorial Site
-  Essential Vegetation



PHYSICAL RESOURCES

-  Right of Way
-  Electric Distribution Line
-  Drainage Swale
-  Trail
-  Pedestrian Connection
-  Vehicular Entrance
-  Noise
-  Vegetated Pond Embankment
-  Pond Maintenance Access
-  Strong Sense of Enclosure
-  Forest Floor Clearing
-  Woods
-  Bus Stop
-  Evergreen Hedge
-  Specimen Tree
-  Transformer Box
-  Traffic Light



VISUAL RESOURCES

-  Woods
-  Specimen Tree
-  Views
-  Vegetated Buffer



**EXISTING
CONDITIONS**



Memorial site from intersection



View of specimen hedgerow tree canopies



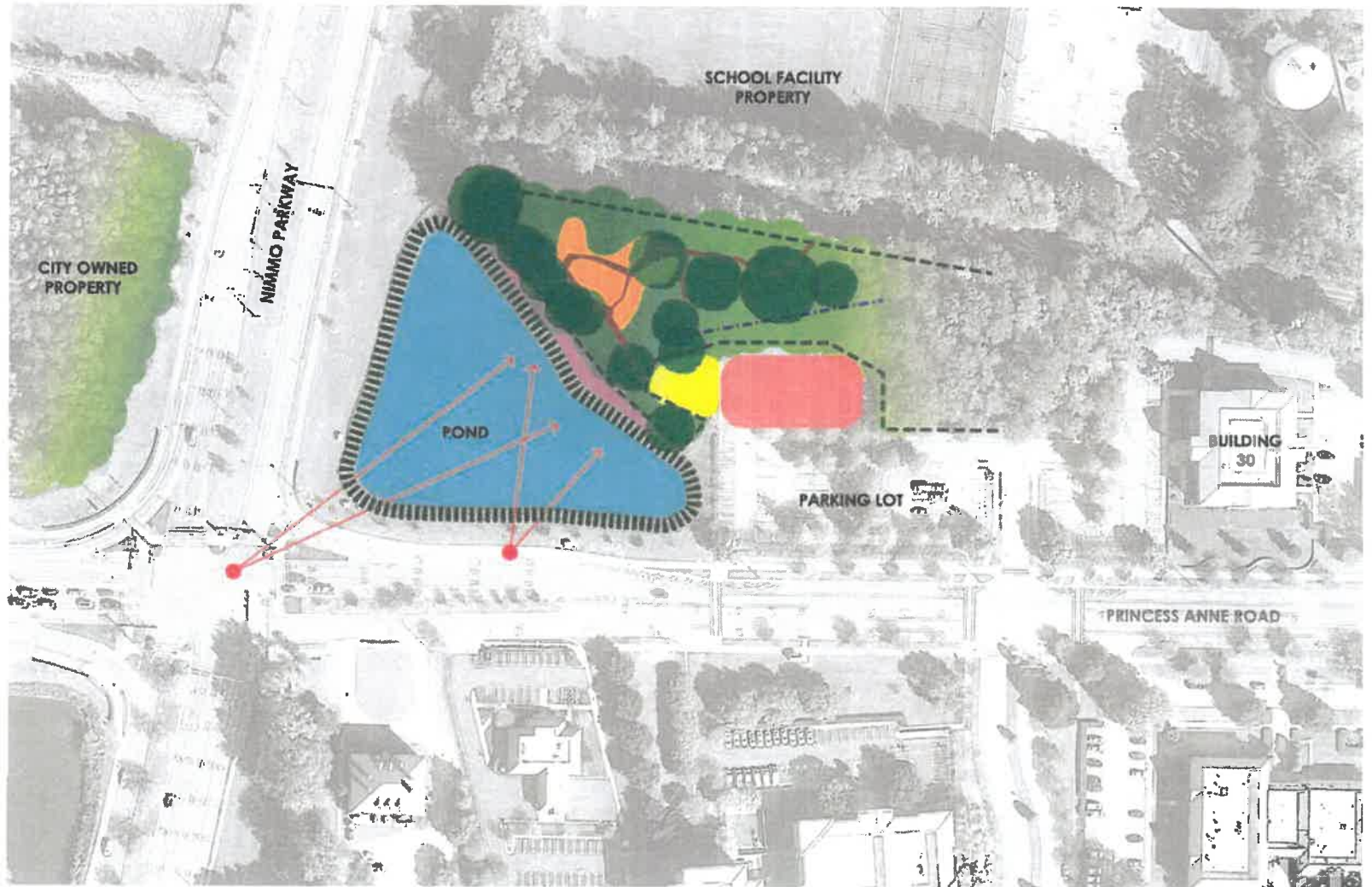
Long view across pond, looking south



View of woodland

PRIMARY SITE FEATURES INFLUENCING DESIGN

-  Surveyed Paths in Woods
-  Ditch; Approx. 1' Deep
-  Forest Edge
-  Vegetated Pond Embankment
-  Forest Floor Clearing Under Canopy
-  Clearing with No Canopy
-  Clearing (Parking Lot)
-  Flat Area Between Forest Edge and Top of Embankment
-  Significant Tree
-  Woods
-  Views



DESIGN NARRATIVE

The Virginia Beach May 31 Memorial is intended to be a journey of remembrance to honor those killed, wounded and traumatized by the tragedy that occurred on the afternoon of May 31, 2019. At the entrance to the memorial site, visitors will find a five-foot-tall, 30-foot-long, granite wall, engraved with text that explains the events of that day, reflects the trauma that has forever changed this community and presents the purpose of the Memorial.

Just past the wall, the visitor begins this reflective experience by walking into and through a hardwood forest. Being in nature is, for many, a reflective experience, and the walk along the elevated boardwalk through the trees begins each visitor's meditative journey. The Memorial is seen through the forest and across a meadow. Along the boardwalk a long curved wooden bench invites the visitor to sit and personally reflect on the serenity of the forest. Then, as one continues along the boardwalk, the path aligns with the Memorial – providing the visitor of the first glimpse of this feature

The Memorial is comprised of three materials -- granite, glass and water. Two 80-foot-long walls within the forest clearing are aligned to focus on the pond beyond. The boardwalk ends by crossing over a pool of moving water onto a granite plaza. The opening of the walls is 40 feet across, narrowing down to 20 feet at the exit --- thus providing a sense of enclosure and noise buffering for the visitor. The entry granite walls are engraved with two quotations. (The words in the visual presentation are meant as place-holders as a process established by the Memorial Committee will determine all of the text on the Memorial site.)

The nine-foot-tall glass panels are engraved with the names of those killed on that tragic afternoon. Additional words suggest the families they belonged to and their service within the community.

Water washes down the face of all the glass panels, over the names, and finally falls into a basin. As a result, the peaceful sound of water resonates throughout the space. Everyone who visits brings their own ideas of symbols and meaning. Water often is a symbol of life. In this place it may also symbolize the sadness and tears shed by those who loved this deceased person. The continuous flowing of water may also reflect the passage of time that is needed to accept and heal from this very personal loss.

The converging walls center on a 25-foot water jet emerging from the pond. The majority of those killed and wounded were engaged with work at Virginia Beach Public Utilities. Storm water management is one of the tasks of this department. The alignment of the center axis of both the Memorial and the water jet points to the location of the sun at 4:20 pm on May 31st, the approximate time that the first

warning messages about an active event went out. At this time every year, the sun will be at a 45-degree angle and shining directly across the water, the water jet and into the Memorial.

Small granite seats, engraved with the Forget-Me-Not symbol, are placed in front of each of the named glass panels—providing a place to sit or to leave a memento of remembrance to this loved one.

When exiting the Memorial plaza, the boardwalk again takes the visitor through the natural setting, comprising a grove of flowering trees, as well as a variety of grasses. Six granite elements each five-foot in diameter and engraved with the Forget-Me-Not symbol, are placed under the tree canopy. These provide places to gather for reflection and are opportunities for discussions for groups visiting the site.

A granite, glass-covered case displays remembrance stones painted by members of the community following the 5/31 event.

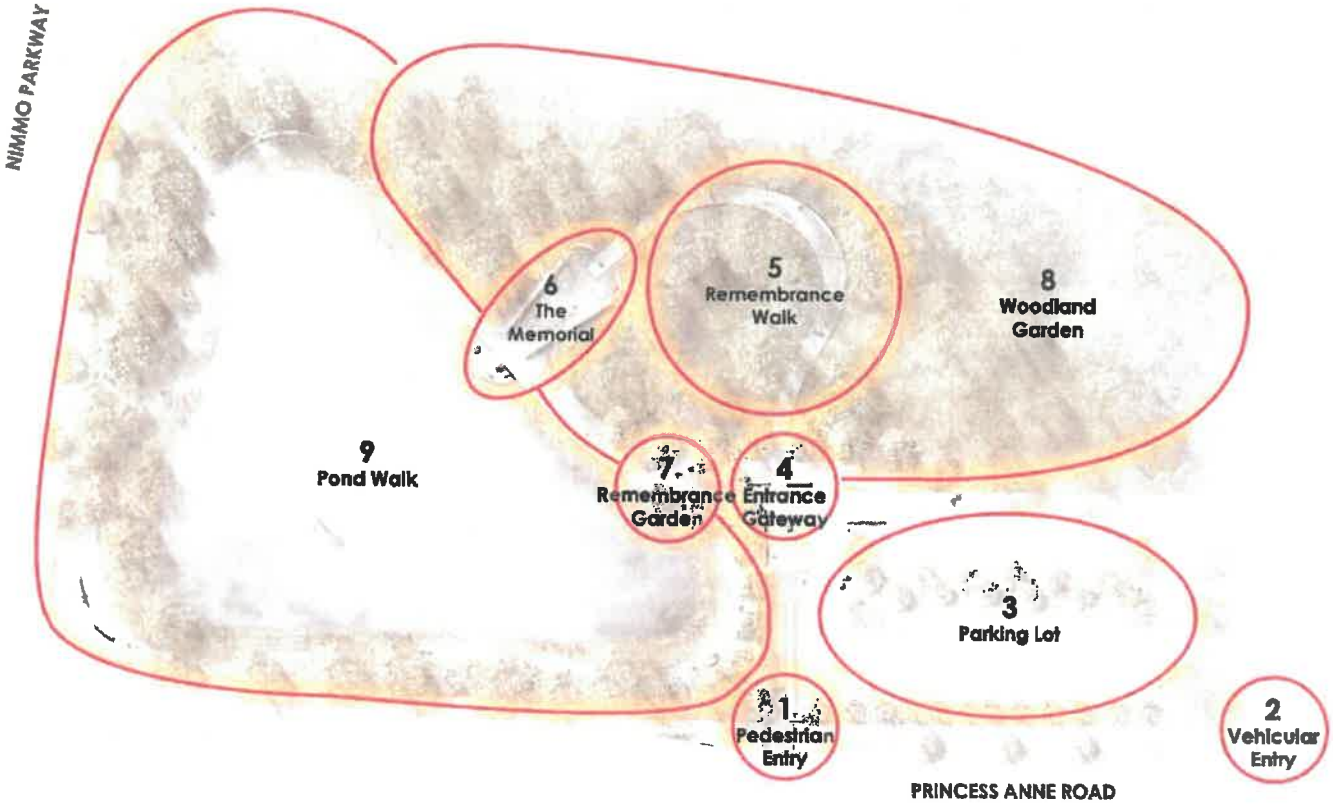
For those wishing to spend more time in this reserve, a pathway along the pond encircles the water with wooden benches and plantings along the way.

The Memorial will be illuminated so that the night time experience will also be both memorable and safe. The boardwalk will emit a soft glow from the sides, and will invite the visitor to travel along this path. In addition, the underside of the tree canopy will create an illuminated enclosure, further enhancing the night time experience. The water flowing over the glass at each memorial column will accentuate the movement in this space, while the water jet in the pond will glow as a beacon for the area. The outside walls of the Memorial will be illuminated so that it will be visible through the trees and across the pond, becoming a nighttime landmark within the city.

In sum, the memorial creates a place of personal reflection, in harmony with its natural setting. The minimalist design and careful selection of elements will create an elegant, inspiring and restrained experience. It will be a place for repeated visits to solemnly reflect on the loss inflicted on this community and the commitment of the residents of, and visitors to, Virginia Beach to never forget.

DESIGN PROGRAM

- 1. Pedestrian Entry
- 2. Vehicular Entry
- 3. Parking Lot
- 4. Entrance Gateway
- 5. Remembrance Walk
- 6. The Memorial
- 7. Remembrance Garden
- 8. Woodland Garden
- 9. Pond Walk



0' 30' 50' 100'
SCALE IN FEET

SITE PLAN

1. Remembrance Wall
2. Entry Walks
3. Remembrance Walk
4. Woodland Garden
5. The Memorial
6. Memorial Jet
7. Remembrance Garden
8. Multi-Purpose Area
9. Pond Walk
10. Parking Lot
11. Bus Stop

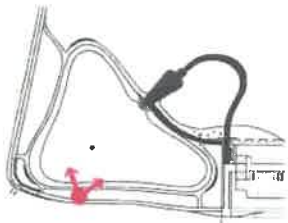


SITE PLAN

1. Remembrance Wall
2. Entry Walks
3. Remembrance Walk
4. Woodland Garden
5. The Memorial
6. Memorial Jet
7. Remembrance Garden
8. Multi-Purpose Area
9. Pond Walk
10. Parking Lot
11. Bus Stop

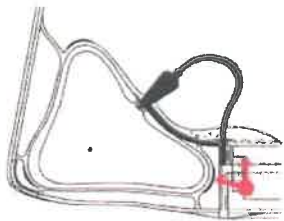


**THE MEMORIAL
FROM THE
POND WALK**



Key Plan

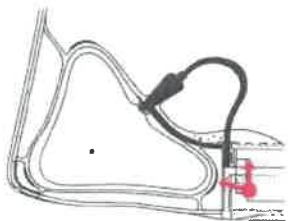
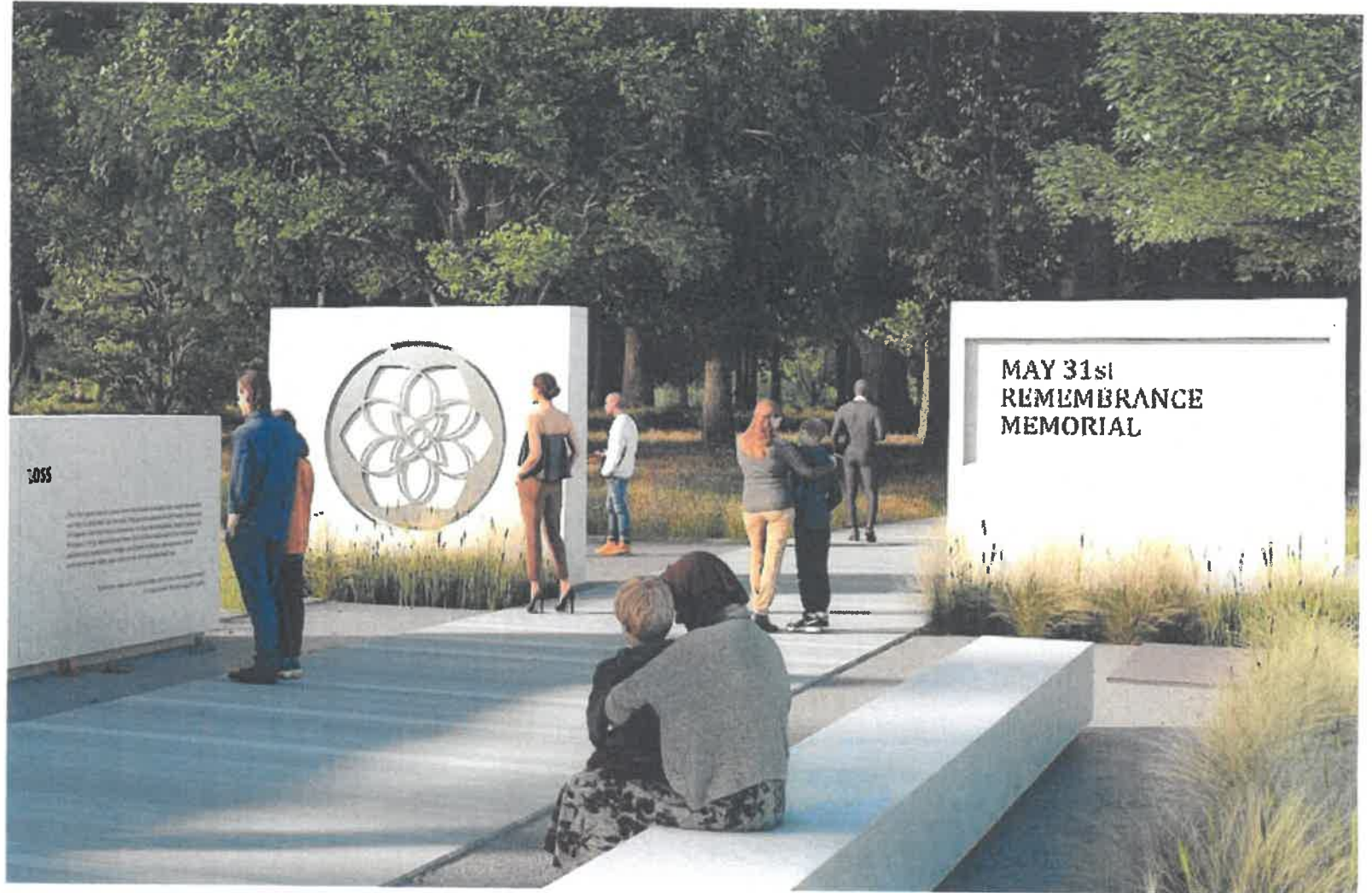
REMEMBRANCE & ENTRY WALLS



Key Plan

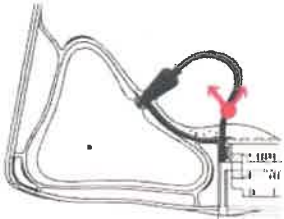


**REMEMBRANCE &
ENTRY WALLS**



Key Plan

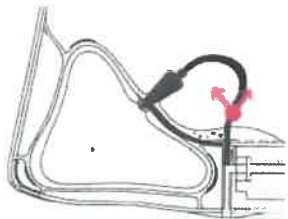
**BOARDWALK &
WOODLAND**



Key Plan

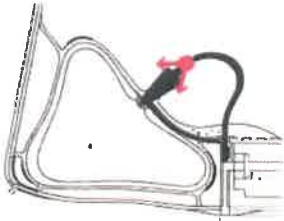


**BOARDWALK &
WOODLAND**



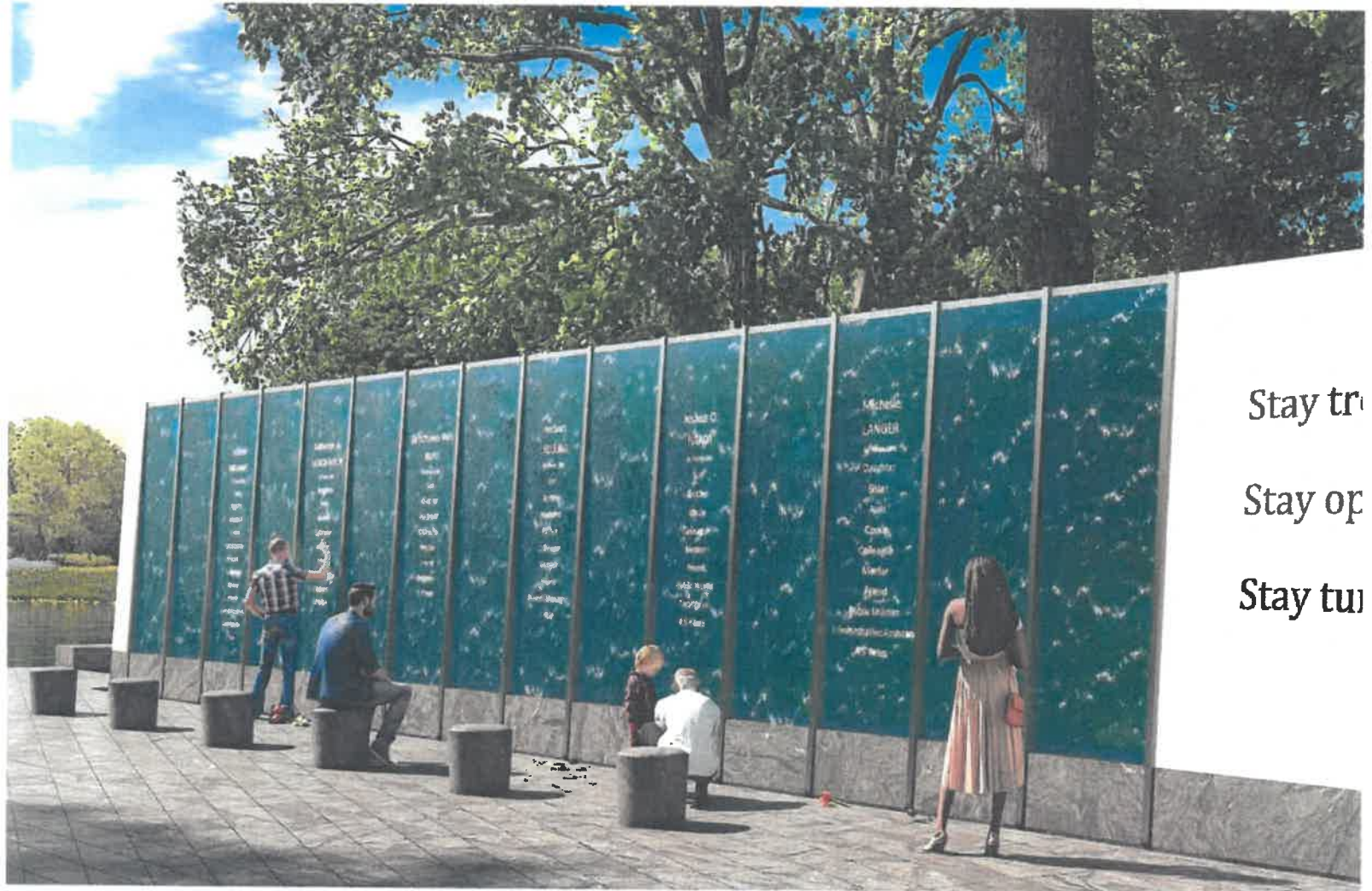
Key Plan

THE MEMORIAL



Key Plan

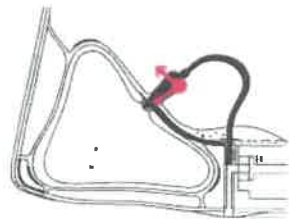
THE MEMORIAL WATER WALL



Stay tr

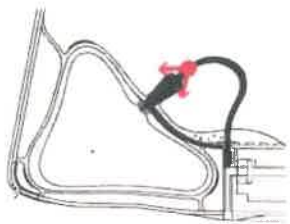
Stay op

Stay tu



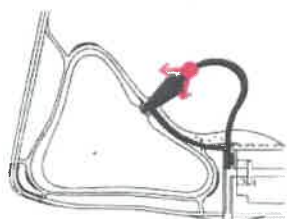
Key Plan

THE MEMORIAL AT NIGHT



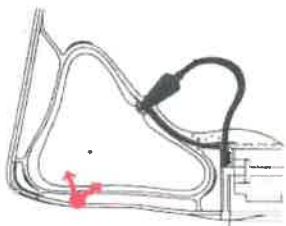
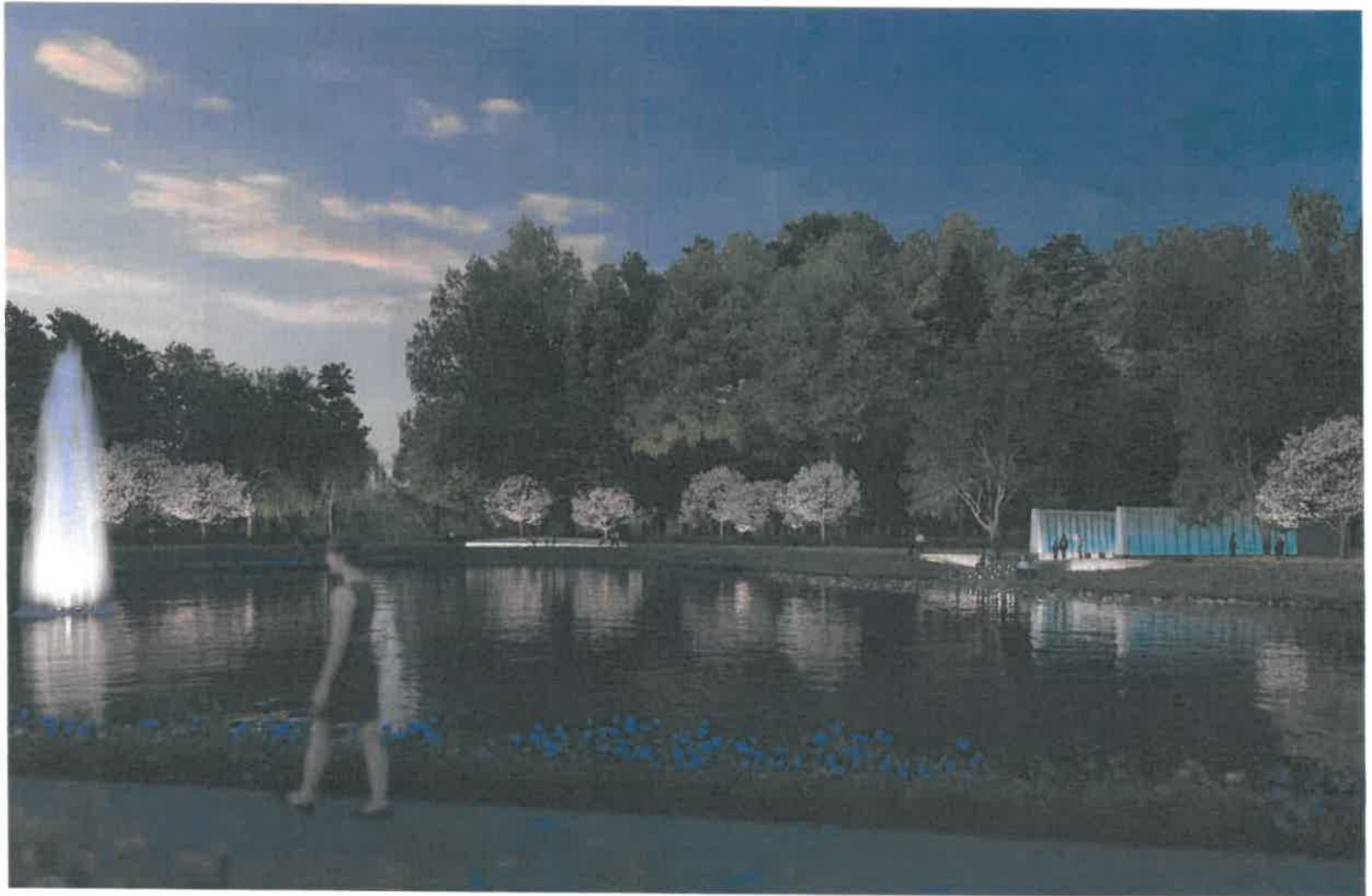
Key Plan

**THE MEMORIAL
AT NIGHT**



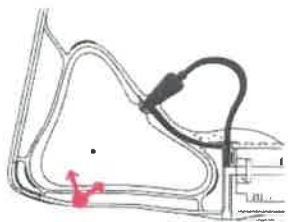
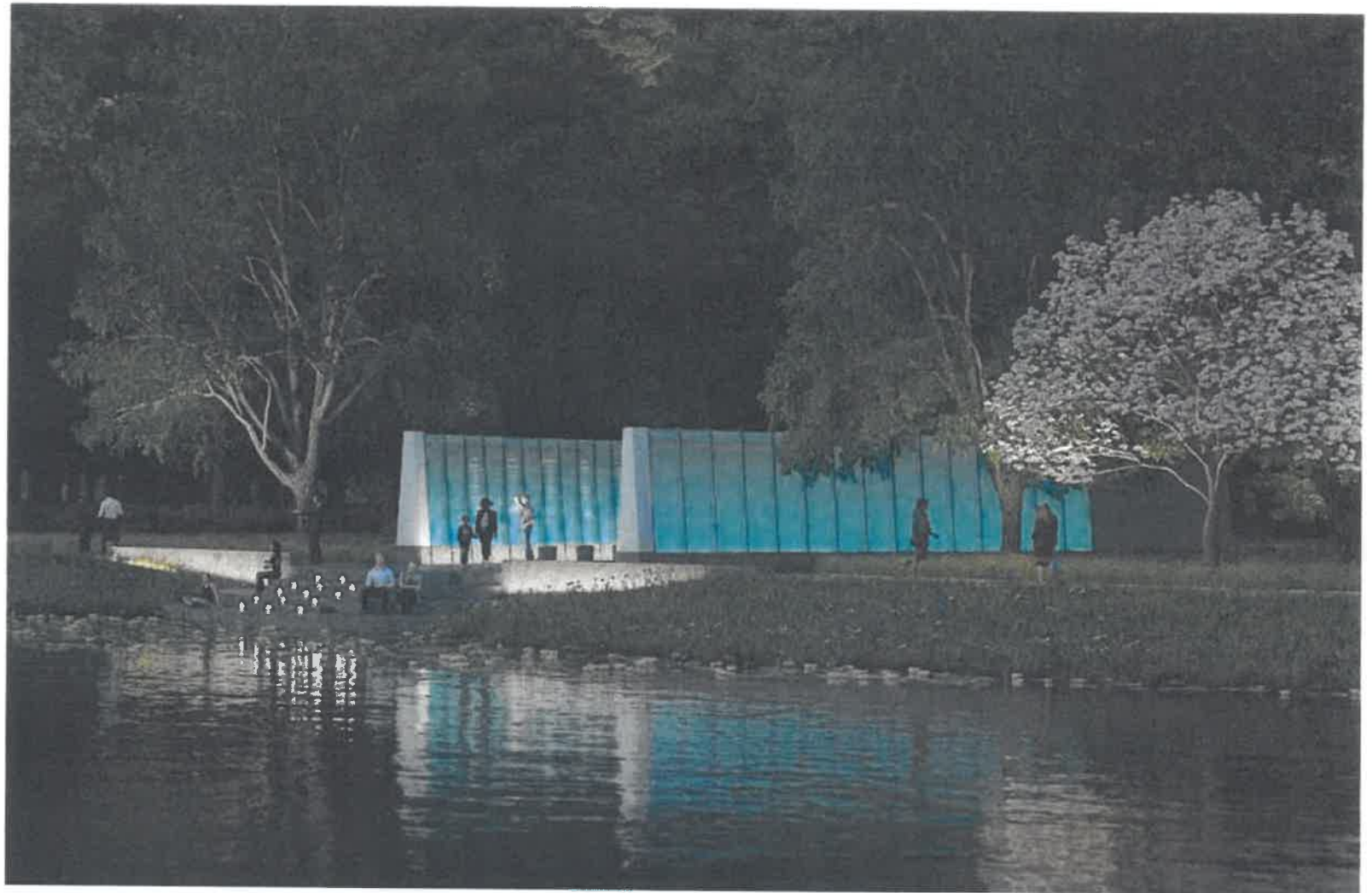
Key Plan

**THE POND WALK
AT NIGHT**



Key Plan

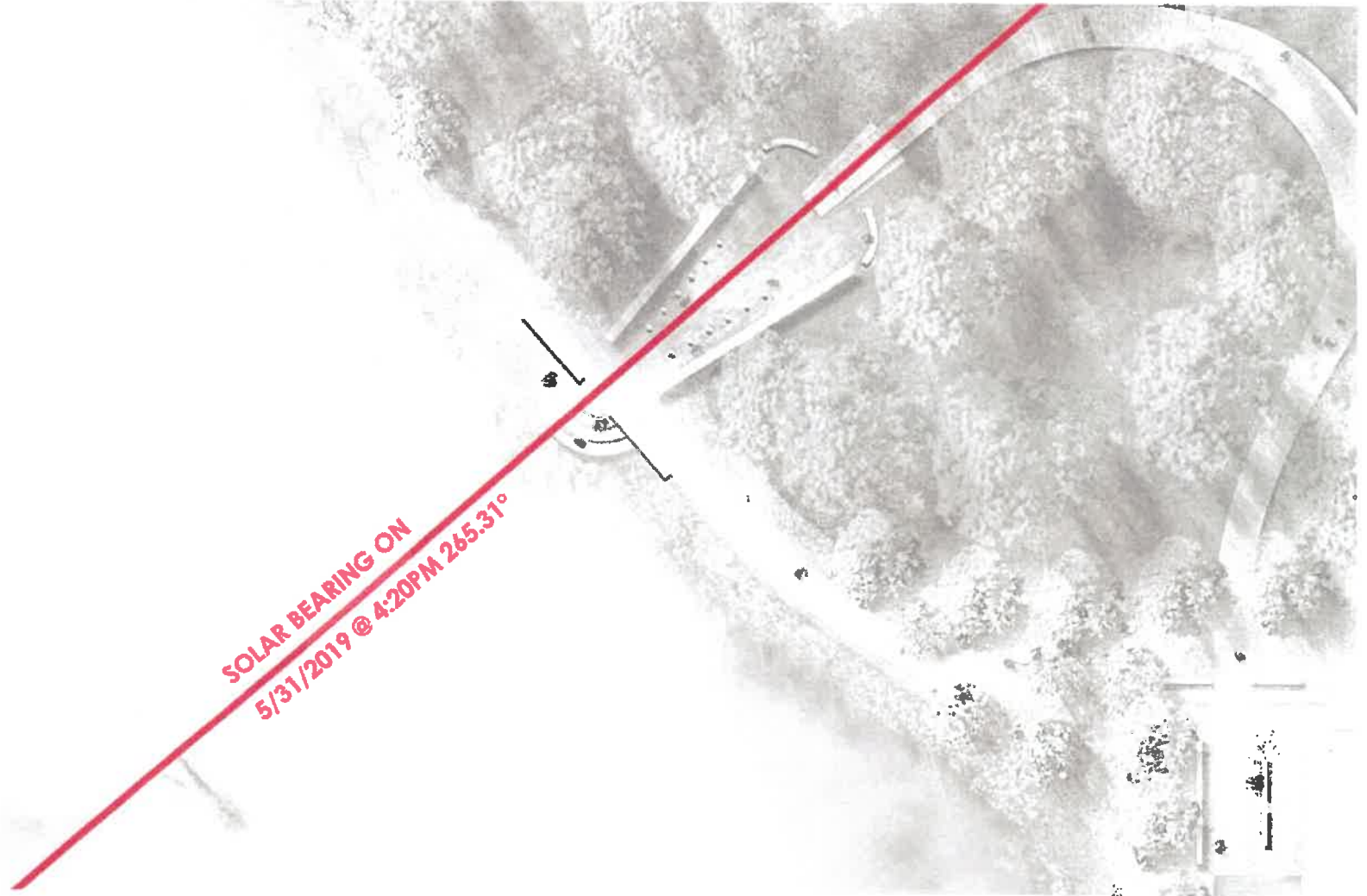
**THE MEMORIAL
AT NIGHT**



Key Plan

PART 2: DETAILS

**SOLAR BEARING
INFORMED
ALIGNMENT OF
MEMORIAL**

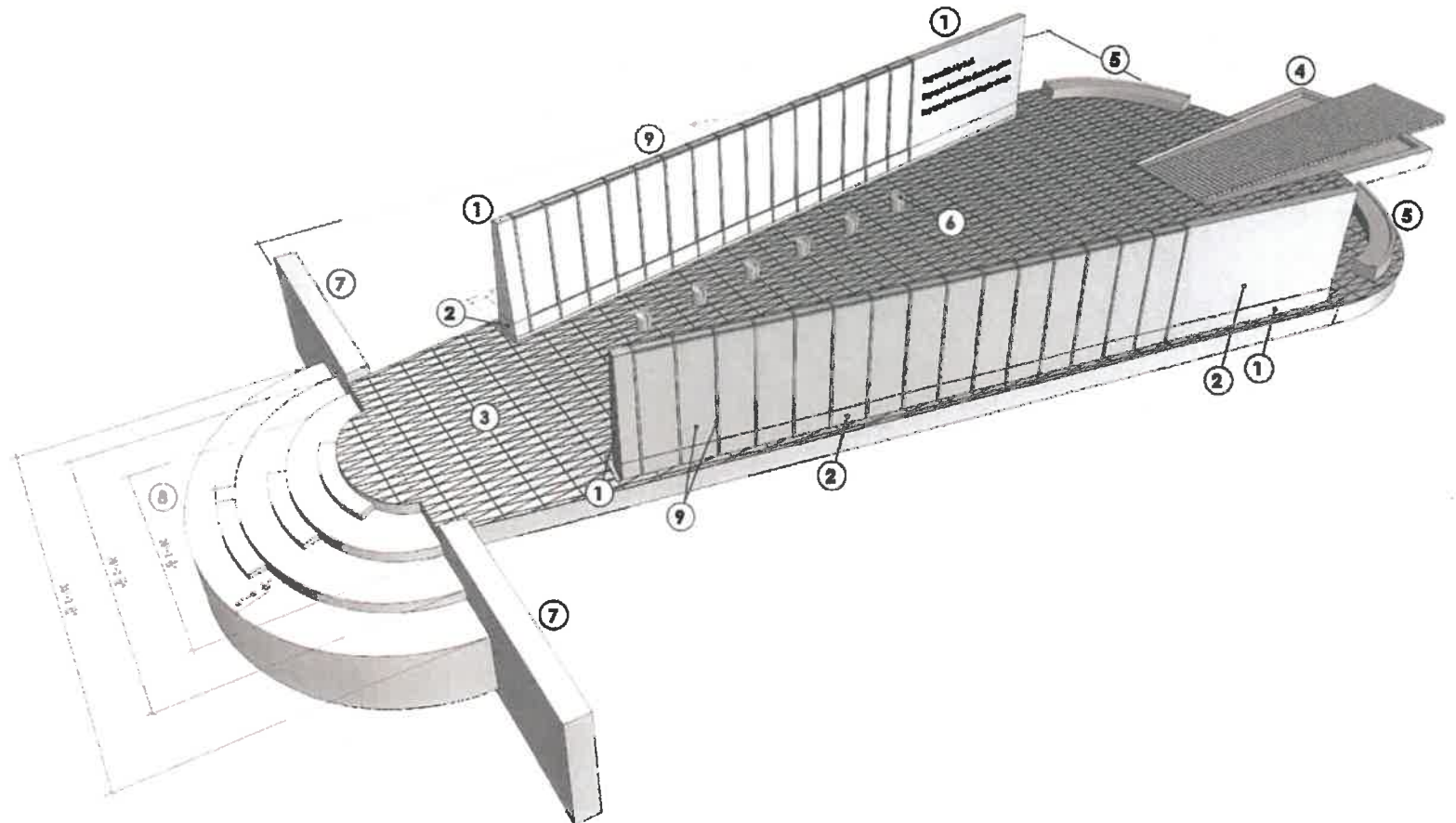


**SOLAR BEARING ON
5/31/2019 @ 4:20PM 265.31°**

0' 30' 50' 100'
SCALE IN FEET

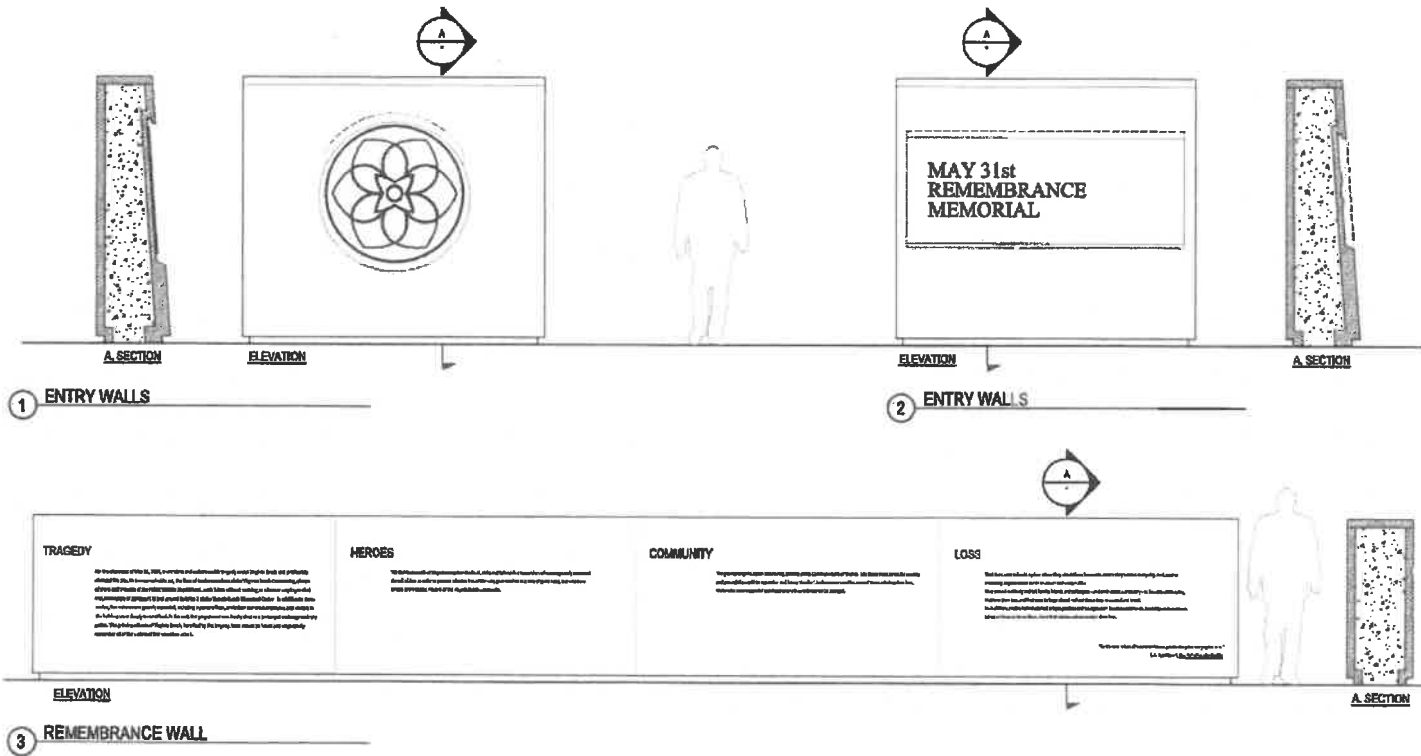
THE MEMORIAL AERIAL VIEW

1. Mt. Aky Granite:
Memorial Wall Ends
2. Virginia Mist Granite:
Base of Memorial Wall
3. Virginia Mist Granite:
Paving
4. Virginia Mist Granite:
Curb
5. Virginia Mist Granite:
Bench
6. Virginia Mist Granite:
Memorial Seats
7. Virginia Mist Granite:
Seat Wall
8. Virginia Mist Granite:
Steps
9. Glass & Steel Panel

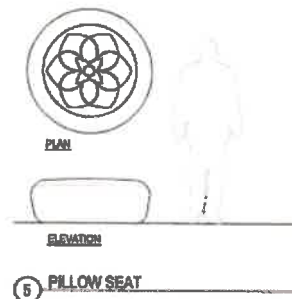
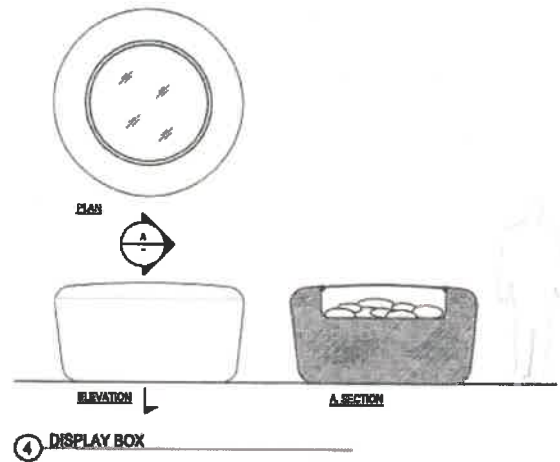


Key Plan

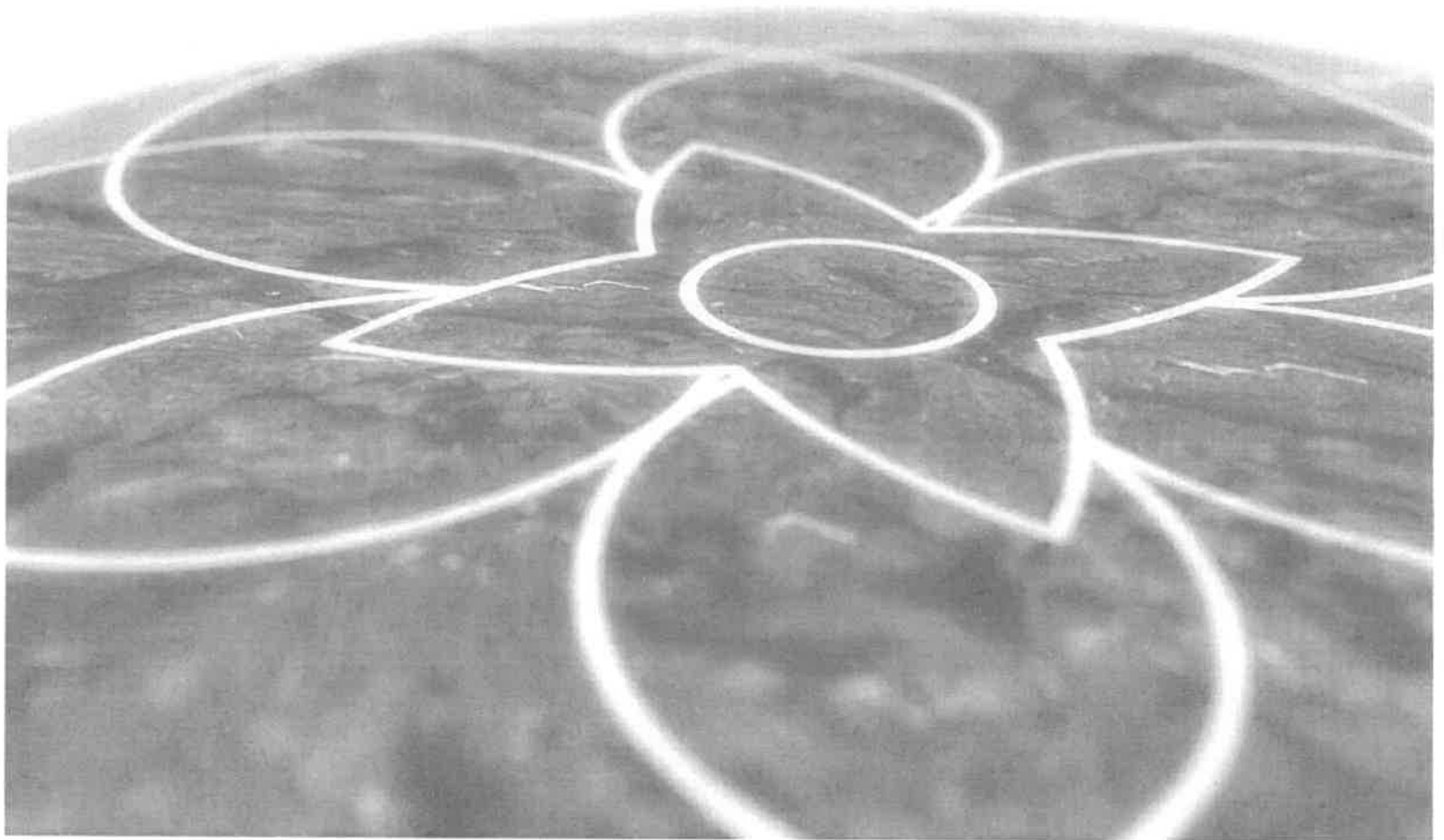
ENTRY & REMEMBRANCE WALLS



**REMEMBRANCE
GARDEN
DISPLAY BOX &
PILLOW SEATS**



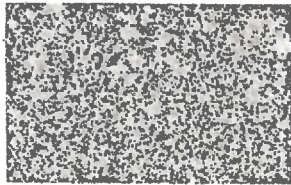
**FORGET-ME-NOT
ENGRAVING ON
PILLOW SEATS**



HARDSCAPE MATERIALS



1. Granite: Virginia Mist



2. Granite: Mt Airy White



3. Sustainable Wood Boardwalk



4. Stabilized Aggregate



5. Brick

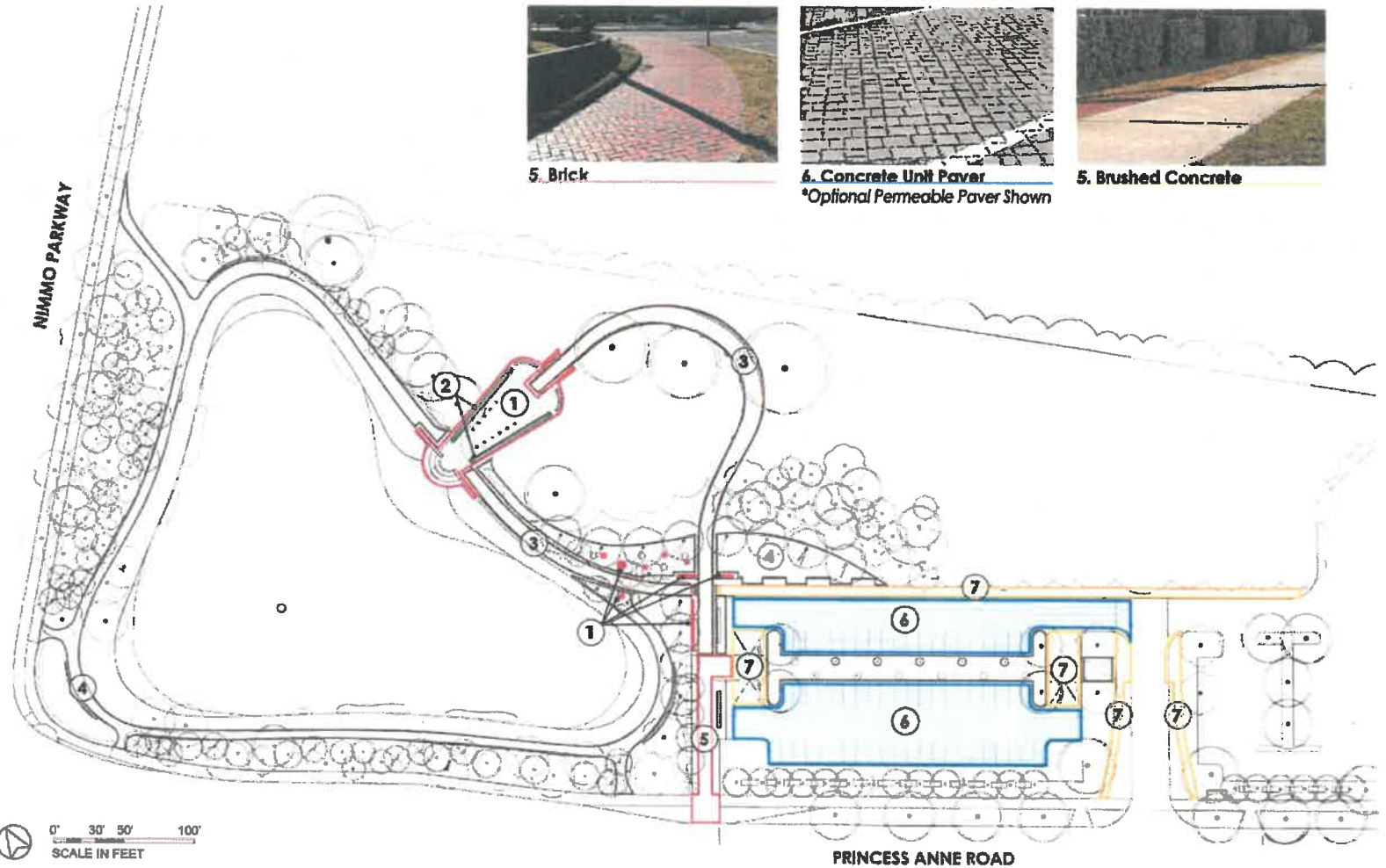


6. Concrete Unit Paver

*Optional Permeable Paver Shown



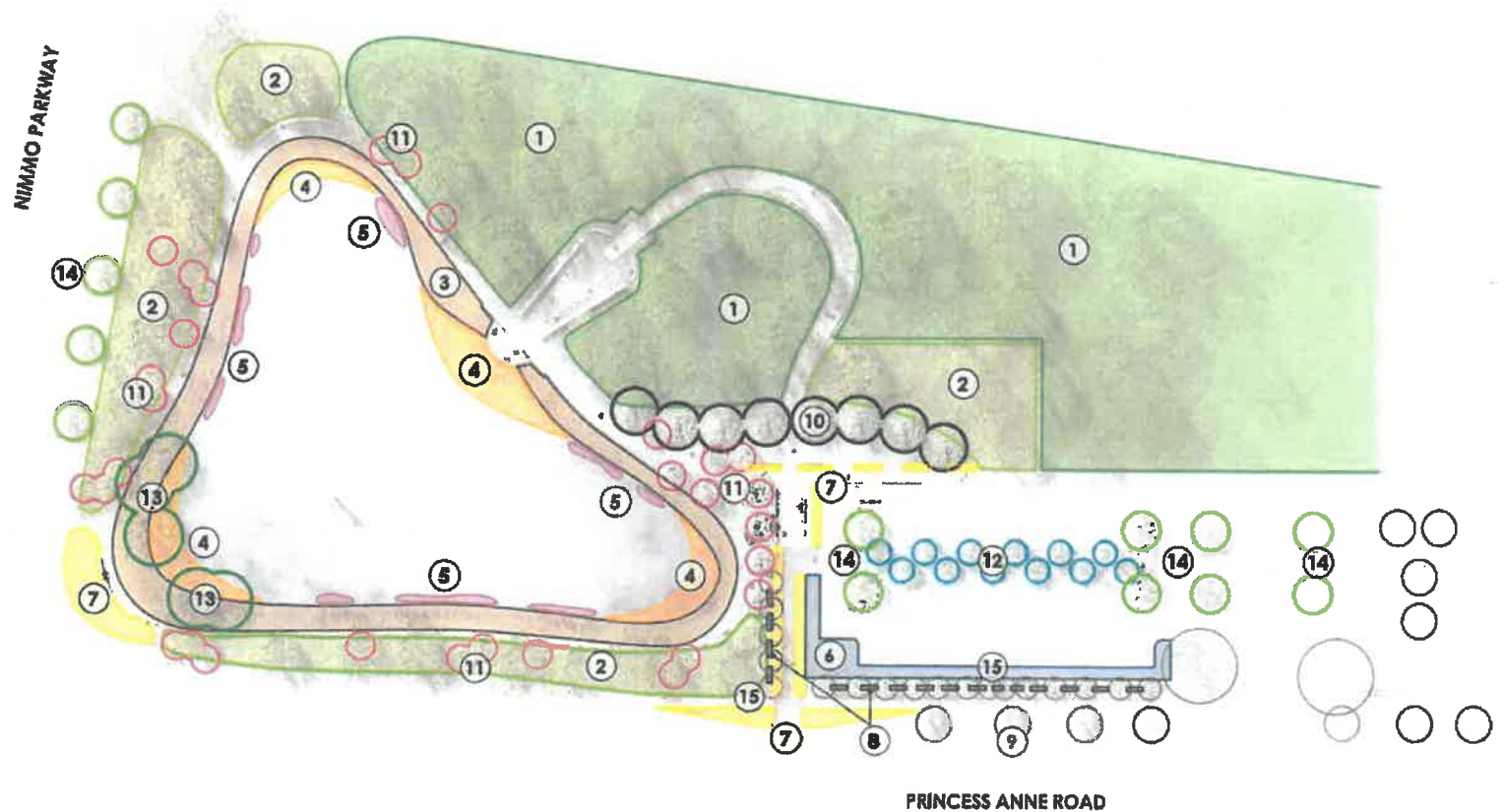
5. Brushed Concrete



PLANTING CONCEPT

1. Woodland Enhancement: Selective Removal and Planting of Native Understory Plants
2. Woodland Expansion / Reforestation: Mixed Native Tree & Understory Plantings
3. Slope Planting: Native Grasses & Perennials Mx
4. American Lotus: Official Flower of Virginia Beach
5. Iris Varieties
6. Bioretention Planting
7. Ornamental Grasses
8. Existing Hedges to Remain, Typical
9. Existing Trees to Remain, Typical
10. Southern Live Oak: Official Tree of Virginia Beach
11. Ornamental Trees, Typical: To Bloom Around 5/31
12. Fastigate Southern Magnolia
13. Weeping Willow
14. Willow Oak
15. Crape Myrtle: Infill Existing

*All plantings to be primarily native to the Virginia Beach region



0' 30' 50' 100'
SCALE IN FEET

**IMAGES OF
SELECT PLANTING
MATERIALS**



Southern Live Oak



Fastigate Southern Magnolia



Flowering Cherry Variety



Enhanced Woodland



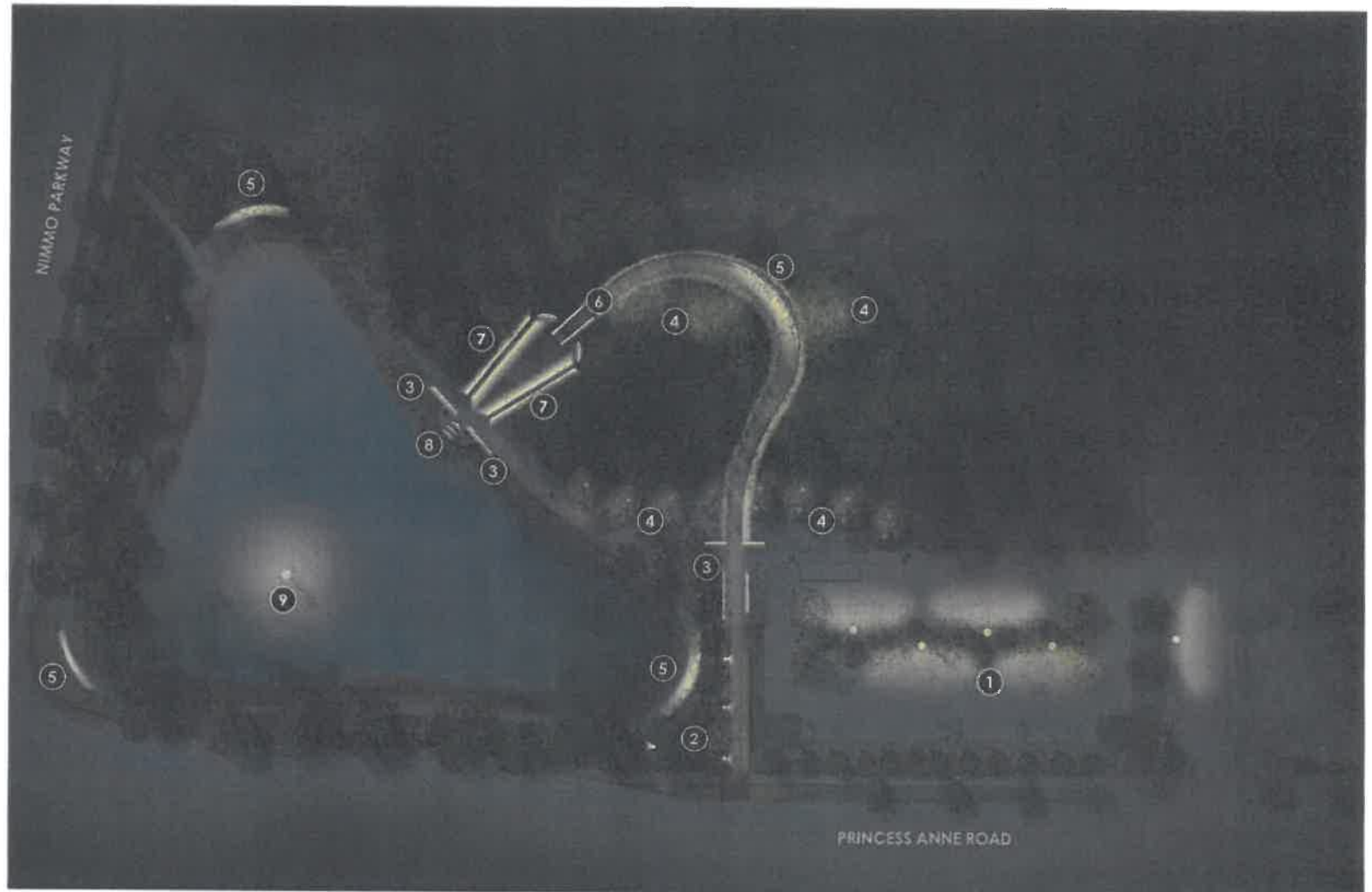
American Lotus



Rush (Bioretention)

LIGHTING CONCEPT

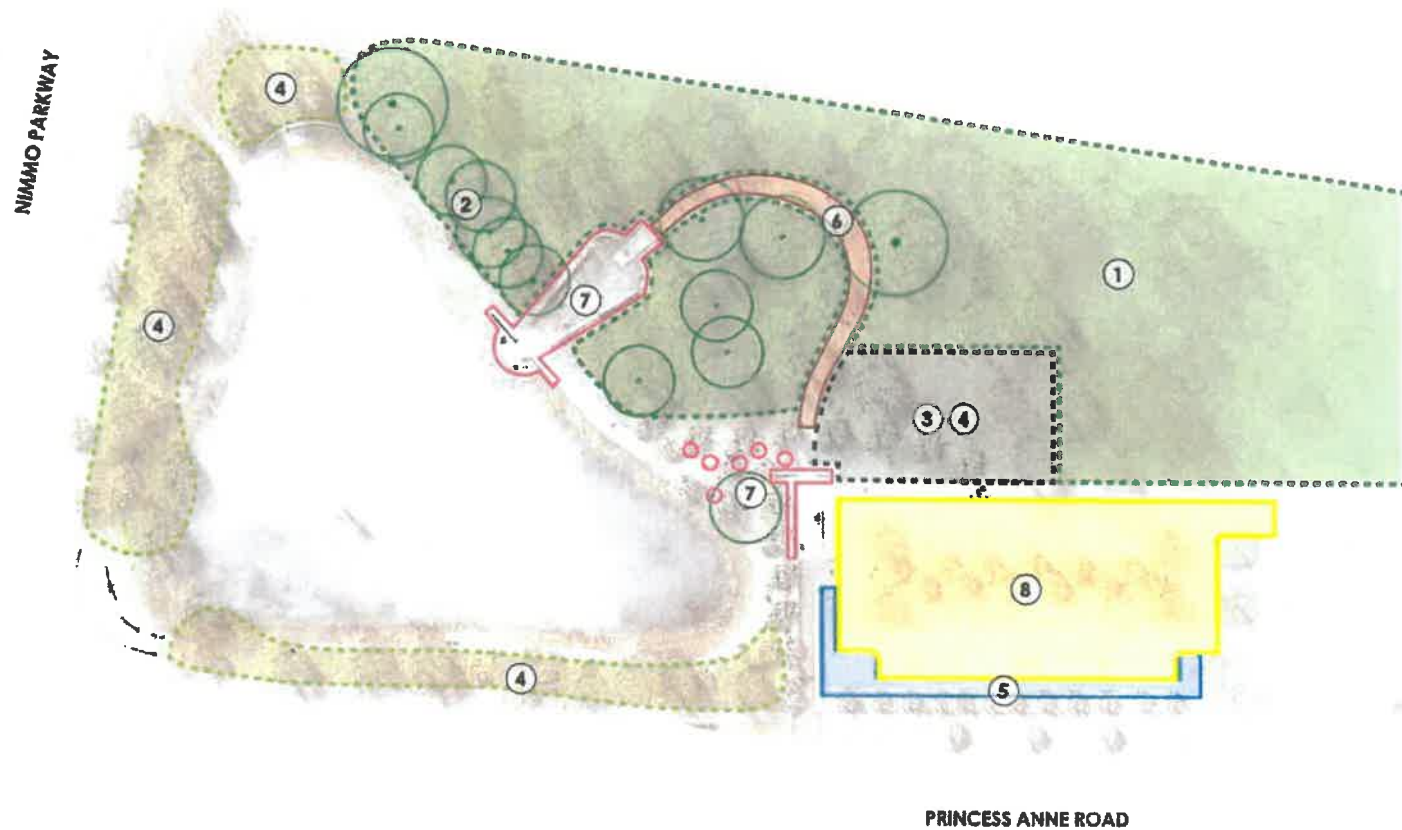
1. Parking Lot Lights
2. Bollards to Light Pedestrian Walkway
3. Linear Grazers to Illuminate Wall Text
4. Uplights to Highlight Trees
5. Under Bench Lighting to Define Seating Areas and Cast a Glow on the Walking Path
6. Lights Under Bridge Cast Glow on Water Underneath Rather than on the Path Itself
7. Linear Lights Integrated Into Waterfall Walls to Illuminate Water and Wall Surface
8. Steplights
9. Fountain Light



0' 30' 50' 100'
SCALE IN FEET









SUSTAINABILITY

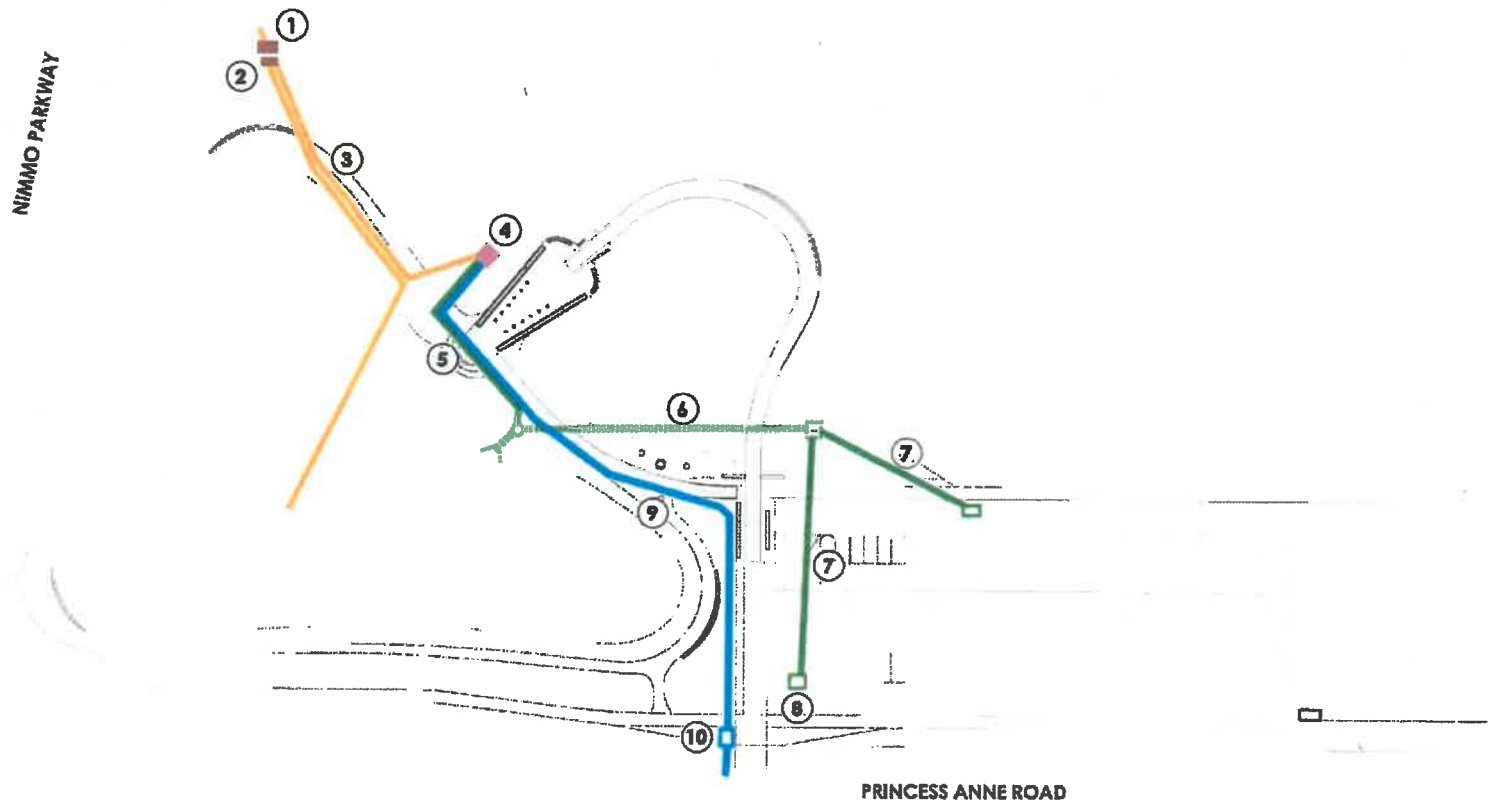
1. Preservation of Woodland
2. Preservation of Legacy Trees
3. Removal of Parking Asphalt
4. New Woodland Plantings
5. Bioretention Facility
6. Sustainable Wood Boardwalk
Floats Over Forest Floor
7. Use of Regional Stone
8. Optional Permeable Paving



INFRASTRUCTURE PRIMARY FEEDS

1. Dominion Power Transformer
2. Panel Board
3. 225 amp 3 Phase Power Feeder
4. Pump Vault
5. 4" Storm
6. Existing Storm
7. New Storm
8. Bioretention Outfall
9. 1-1/2" Water Line
10. 1-1/2" Water Meter

-  Pump Vault
-  Electric Facility
-  Water Meter
-  Storm Inlet
-  Electric Line
-  Water Line
-  Proposed Storm Line
-  Existing Storm Line



PART 3:
COST ESTIMATE

COST ESTIMATE ZONES

- 1. Parking Lot
\$565,536
- 2. Reforestation
\$98,111
- 3. Entry
\$710,486
- 4. Memorial
\$4,246,695
- 5. Pond Enhancement
\$17,451
- 6. Reforestation
\$466,318
- 7. Garden
\$452,813
- 8. Reforestation / Understory
\$101,218

General Requirements
\$547,579

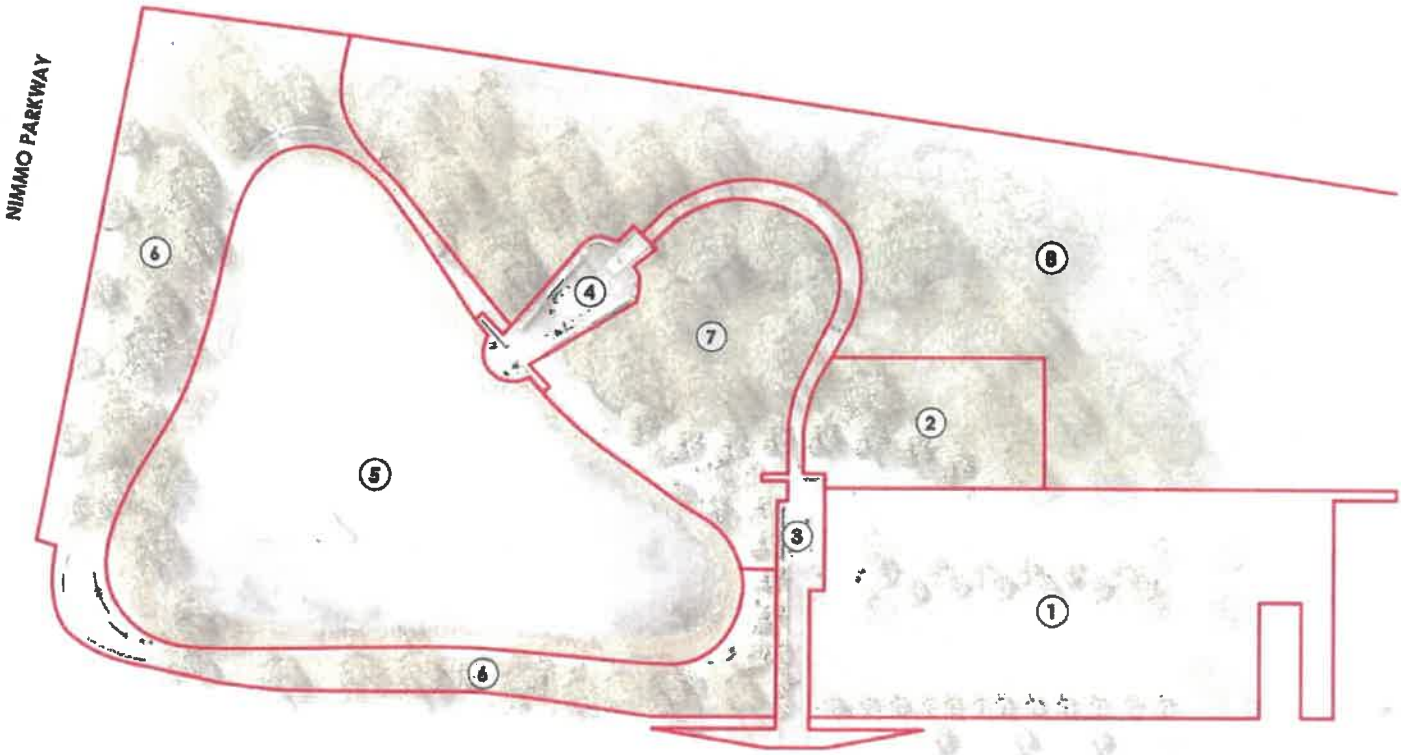
Infrastructure
\$537,475

Sub Total of Work
\$7,743,680

Contingencies (15%)
\$1,161,552

Mobilization (6%)
\$534,314

CONSTRUCTION TOTAL
\$9,439,546



PRINCESS ANNE ROAD

COST ESTIMATE: DETAILED BREAKDOWN

Sub Total of Work **\$7,743,680**
 Contingencies (15%): **\$1,161,552**
 Mobilization (6%): **\$534,314**
CONSTRUCTION TOTAL \$9,439,546

GENERAL REQUIREMENTS					\$547,671
Construction Surveying	LS	\$15,000.00	1	\$15,000	
Erosion Control	LS	\$17,000.00	1	\$17,000	
Construction Fence	LF	\$68.00	2,860	\$194,080	
Selective Clearing/Grubbing	EA	\$1,000.00	100	\$100,000	
Construction Sign	EA	\$1,500.00	1	\$1,500	
Gravel Construction Entrance	TNS	\$49.00	96	\$4,800	
Rough Grading	SY	\$1.00	4,500	\$4,500	
Fine Grading	SF	\$1.00	58,395	\$58,395	
Earth Moving	CY	\$50.00	3,000	\$150,000	
1 PAVING LOT					2,553,824
Remove Existing Lot	CV	\$90.00	1,365	\$122,850	
Saw Cut	LF	\$2.60	100	\$260	
Lighting	LS	\$25,000.00	1	\$25,000	M King + Associates, Inc.
Blue Racks	EA	\$1,000.00	3	\$3,000	
Asphalt	SY	\$75.00	1,423	\$106,725	
Relocate Bus Stop	LS			Assumed by others	
C/P Concrete	SY	\$150.00	586	\$87,900	
Pavement Markings	LF	\$2.89	1,500	\$4,335	
Stabilized Decomposed Granite	SF	\$25.00	3,897	\$97,425	
Concrete Curb	LF	\$30.00	1,294	\$38,820	
Plant Trees (6" HI.)	EA	\$500.00	12	\$6,000	
Plant Trees (2" Cal.)	EA	\$550.00	10	\$5,500	
Vehicular Grade C/P Concrete	SY	\$190.00	144	\$27,360	
Shrubs (1 Gal.)	EA	\$75.00	129	\$9,675	
Perennials (1 Qt.)	EA	\$25.00	581	\$14,525	
Sod	SF	\$3.00	5,387	\$16,161	
2 REFORESTATION					108,111
Live Oaks (2.5-3" Cal.)	EA	\$600.00	4	\$3,600	
Reforestation Trees	EA	\$50.00	25	\$1,250	
Ornamental Grasses (1 Qt.)	EA	\$25.00	45	\$1,125	
Bulbs	EA	\$3.50	43	\$151	
Stabilized Decomposed Granite	SF	\$25.00	2,959	\$73,975	
Aluminum Edging	LF	\$30.00	397	\$11,910	
Feature Lighting	LS	\$4,000.00	1	\$4,000	M King + Associates, Inc.
3 ENTRY					1,710,454
Boardwalks- At Grade	SF	\$90.00	864	\$77,760	Modular Trail Structures, LLC
Boardwalks- Elevated	SF	\$90.00	3,771	\$339,390	Modular Trail Structures, LLC
Custom Bench	EA	\$180,000.00	1	\$180,000	Landscape Farms Inc.
Brick	SY	\$43.00	187	\$8,410	
Stabilized Decomposed Granite	SF	\$25.00	637	\$15,925	
Granite Bench	EA	\$4,000.00	1	\$4,000	
Aluminum Edging	LF	\$30.00	226	\$6,780	
Concrete Curb	LF	\$32.00	100	\$3,200	
Feature Lighting	LS	\$45,000.00	1	\$45,000	M King + Associates, Inc.
Ornamental Grasses (1 Qt.)	EA	\$25.00	268	\$6,700	
Bulbs	EA	\$3.50	376	\$1,316	
4 MEMORIAL					1,126,692
Memorial Glass	LS	\$312,450.00	1	\$312,450	Larry Studios
Stainless Steel Frames (Plaza Walls)	LS	\$450,000.00	1	\$450,000	Emerical Courts
Stainless Steel Frames (Entry Walls)	LS	\$10,500.00	1	\$10,500	Emerical Courts
Granite (All Site Features)	LS	\$2,200,000.00	1	\$2,200,000	Lorton Stone, LLC
Memorial Fountain (Vault & Equipment)	LS	\$359,926.00	1	\$359,926	Georgia Fountain Company
Fountain Excavation, Formwork & Build-up	LS	\$359,926.00	1	\$359,926	Georgia Fountain Company
Feature Lighting	LS	\$175,000.00	1	\$175,000	M King + Associates, Inc.
Pond Fountain	LS	\$75,693.00	1	\$75,693	Georgia Fountain Company
Pond Fountain- Lighting	LS	\$3,000.00	1	\$3,000	M King + Associates, Inc.
5 POND ENHANCEMENTS					17,411
Aquatic Plantings (1 qt)	EA	\$25.00	391	\$9,775	
Hydroseed	SY	\$4.00	1,919	\$7,676	

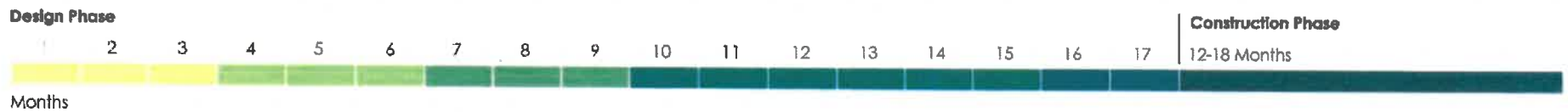
6 REFORESTATION					\$448,118
Stabilized Decomposed Granite	SF	\$25.00	8,946	\$223,650	
Aluminum Edging	LF	\$30.00	60	\$1,800	
Cleaning/Repair of Existing Brick Wall	SF	\$20.00	65	\$1,300	
Prefabricated Bench	EA	\$37,500.00	3	\$112,500	
Plant Tree (6" HI.)	EA	\$500.00	23	\$11,500	
Plant Tree (1" Cal.)	EA	\$350.00	51	\$17,850	
Plant Tree (6-8" HI.)	EA	\$300.00	18	\$5,400	
Path Lighting	LS	\$18,000.00	1	\$18,000	M King + Associates, Inc.
Shrubs (1 Gal.)	EA	\$75.00	200	\$15,000	
Perennials (1 Qt.)	EA	\$25.00	1,836	\$45,900	
Bulbs	EA	\$3.50	2,805	\$9,818	
7 GARDEN					149,813
Live Oaks (2.5-3" Cal.)	EA	\$800.00	4	\$3,200	
Plant Tree (6"	EA	\$500.00	5	\$2,500	
Shrubs (1 Gal.)	EA	\$75.00	200	\$15,000	
Perennials/Ferns (1 Qt.)	EA	\$25.00	1,836	\$45,900	
Bulbs	EA	\$3.50	2,805	\$9,818	
Ornamental Grasses (1 Qt.)	EA	\$25.00	397	\$9,925	
Prune Existing Tree	EA	\$400.00	40	\$16,000	
Aluminum Edging	LF	\$30.00	335	\$10,050	
Boardwalks- At Grade	SF	\$90.00	1,739	\$156,510	Modular Trail Structures, LLC
Stabilized Decomposed Granite	SF	\$25.00	7,116	\$177,900	
Feature Lighting	LS	\$7,000.00	1	\$7,000	M King + Associates, Inc.
8 REFORESTATION / UNDERSEED					191,210
Shrubs (1 Gal.)	EA	\$75.00	200	\$15,000	
Perennials (1 Qt.)	EA	\$25.00	1,836	\$45,900	
Bulbs	EA	\$3.50	2,805	\$9,818	
Prune Existing Tree	EA	\$400.00	70	\$28,000	
Reforestation Trees	EA	\$50.00	50	\$2,500	
9 INFRASTRUCTURE					1,527,671
Remove Storm Pipe	LS	\$4,000.00	1	\$4,000	
1-1/2" Water Line	EA	\$90	400	\$36,000	
Connect to Existing	EA	\$1,000	4	\$4,000	
18" Drain Pipe	LF	\$380	240	\$91,200	
New Drainage Structures	EA	\$6,000	4	\$24,000	
Slo Drain	LF	\$330	140	\$46,200	
4" Storm Pipe	LF	\$70	150	\$10,500	
Underdrain	LF	\$80	220	\$17,600	
Electrical Infrastructure	LS	\$42,000	1	\$42,000	
Concrete Foundations	CY	\$475	135	\$64,125	
Plaza Concrete Slab for Granite Pavers	CY	\$50	55	\$2,750	
Walkway Fountain Foundation	CY	\$475	12	\$5,700	
Lighting Conduit & Cable	LF	\$25	2,500	\$62,500	
Handholes	EA	\$400	15	\$6,000	
CONSTRUCTION TOTAL					\$7,743,680
Sub Total of Work					\$7,743,680
Contingencies (15%)					\$1,161,552
Mobilization (6%)					\$534,314
Construction Total					\$9,439,546
PROJECT TOTAL					\$9,439,546

The budget estimate for the conceptual design of Virginia Beach May 31 Memorial was generated with the assistance of the fine craft artisans we have worked with to create other commemorative artworks. These craftsmen are partners in creating detailed and complex commemorative artworks.

Additional Notes:
 Costs include labor at prevailing wage
 Permits and response are not included in this estimate
 Estimates based on February 2023 pricing. Labor and material escalation costs are not included
 Granite cost estimates valid for 30-days per Lorton Stone

**PART 4:
ADDITIONAL
INFORMATION**

PROJECT SCHEDULE & ENGAGEMENT



1. Concept Design Refinement	2. Schematic Design	3. Design Development	4. Construction Documents	5. Bidding	6. Construction
<ul style="list-style-type: none"> A. Engagement with the 5/31 Memorial Committee, families & City staff B. Weekly coordination meetings with the City's Project Team C. Monthly meetings with the 5/31 Memorial Committee and City's Project Team D. Team assistance with fundraising, if requested by City 	<ul style="list-style-type: none"> A. Engagement with the 5/31 Memorial Committee, families & City staff B. Weekly coordination meetings with the City's Project Team C. Monthly meetings with the 5/31 Memorial Committee and City's Project Team D. Team assistance with fundraising, if requested by City 	<ul style="list-style-type: none"> A. Engagement with the 5/31 Memorial Committee, families & City staff B. Weekly coordination meetings with the City's Project Team C. Monthly meetings with the 5/31 Memorial Committee and City's Project Team 	<ul style="list-style-type: none"> A. Engagement with the 5/31 Memorial Committee, families & City staff B. Weekly coordination meetings with the City's Project Team C. Monthly meetings with the 5/31 Memorial Committee and City's Project Team 	<ul style="list-style-type: none"> A. Engagement with the 5/31 Memorial Committee, families, City staff & others B. Bi-weekly coordination meetings with the City's Project Team C. Monthly meetings with the 5/31 Memorial Committee and City's Project Team 	<ul style="list-style-type: none"> A. Engagement with the 5/31 Memorial Committee, families, City staff & others B. Bi-weekly coordination meetings with the City's Project Team C. Monthly meetings with the 5/31 Memorial Committee and City's Project Team
Timeframe					
3 Months	3 Months	3 Months	6 Months	1-2 Months	12-18 Months

ENGAGEMENT PLAN

Our engagement plan (previously submitted on December 23, 2022) encompasses a sensitive, realistic, and timely process to engage a wide range of participants, including those who may want to speak in small group discussions or more intimate, one-on-one sessions. We look forward to working with Bethany Hundley, Emily Spruill Labows, Chad Morris, Emily Archer, and other City staff to ensure we include all essential stakeholders as appropriate throughout the process. The approach for engagement will be integrated into the overall project schedule presented on the previous page.

Post Team Selection Engagement

Our team will be honored to prepare the final design for the Virginia Beach 5/31 Remembrance Memorial. If our team is selected, we recommend initiating a project kickoff meeting(s) to involve the 5/31 Memorial Committee, families, stakeholders, and City staff as a first step in evolving the competition design concept. The project kickoff will be used to understand comments received during the post-interview community engagement process and to delve into greater detail regarding memorial design elements. Following the project kickoff, we will regularly engage the 5/31 Memorial Committee, families, City staff and other community stakeholders at critical design milestones. Upon team selection, we will work with the City staff and the 5/31 Memorial Committee to refine our engagement approach.

Project Kickoff Engagement

1. Conduct a 3-day visioning session in Virginia Beach which will include the following meetings:
 - a. Day 1 (am): A project kick-off work session with City staff. This meeting will be used to:
 - Review the project scope, schedule, and construction budget.
 - Discuss input from stakeholders obtained during the design competition phase.
 - Brainstorm opportunities for refining design competition recommendations
 - Tour memorial site in order to discover design issues.
 - b. Day 1 (pm): A visioning session with the 5/31 Memorial Committee. This meeting will be used to identify issues, concerns, and visions for evolving the competition design concept.
 - c. Day 2 (all day): Conduct individual meetings with families and stakeholders who wish to participate privately. Sessions may consist of 30-minute to 1-hour sessions with the design team to review issues, concerns, and visions for evolving the competition design concept.
 - d. Day 3 (am): A debrief / work session with City staff to discuss- 1) information learned at the visioning session with the 5/31 Memorial Committee and individual meetings held with families/stakeholders, 2) design refinement opportunities and 3) next steps.

Concept & Schematic Design Engagement

1. Prepare design refinements to the design competition recommendations for the memorial based on comments received at Project Kickoff Engagement.
2. Present design refinements to the 5/31 Memorial Committee. The concept refinements will also be shared with families and other relevant stakeholders for additional feedback.

There may be a series of cycles of this task.

3. Work with 5/31 Memorial Committee and City staff to finalize design concept elements.
4. Stakeout the preferred design concept at the memorial site to enable the 5/31 Memorial Committee and stakeholders to visualize the design and provide comments for further refinements.
5. Develop refinements to the concept plan based on 5/31 Memorial Committee and City staff comments and develop a package of Schematic Design drawings.
6. Update design plans as appropriate based on comments previously made.
7. Conduct a public open house to share and discuss the Schematic Design plans. The plans should also be available online for review.
8. Compile and develop a Basis of Design Report outlining the results of community visioning sessions, stakeholder/public meetings, communicated project goals and objectives, design evolution related to comments received, and Schematic Design.

Design Development and Construction Documentation Engagement

9. Conduct a design and construction documentation phase kickoff with City staff and the 5/31 Memorial Committee at the start of the Design Development and Construction Documentation phases of design.
10. Facilitate a public open house at both the Design Development and Construction Documentation phases of work.
11. Continually facilitate regular check-ins with the 5/31 Memorial Committee (perhaps on a monthly basis) throughout the design process to refine details related to the development of project elements.
12. Coordinate with individual families and stakeholders, as needed, to obtain feedback on design progress and details related to the memorial design.
13. Update the Basis of Design Report through the design process, as appropriate or as needed.

Additional Engagement Strategies

In addition to the strategies listed above, our team can initiate the following engagement tools to maximize opportunities for community members to engage in the design process (these strategies were included as potential tools on the LoveforVB.com website):

- Televised community conversations
 - May include dial-out to homes in Virginia Beach
 - May include simulcast in multiple languages
- Online surveys
- Virtual discussion boards
- "Meeting in a box" for community organizations
- "Pop up" engagement at events

Project Schedule

Please refer to project schedule for an update.

**PART 5:
DESIGN TEAM**

DESIGN TEAM

Rhodeside Harwell (RH)
Landscape Architecture
Engagement

Elliot Rhodeside
Deana Rhodeside
Ron Sessoms
Derrick Wolbaum
Megan Mansell
Sukirti Ghosh
Yoshihiko Kubota
Mary Zimmerman

Larry Kirkland Studio
Artist

Larry Kirkland
John Grant
Michael Mowry

Clark Nexsen
Engineering
Architecture
Permitting

Thomas Dalton
David Pryor

CM Kling + Associates, Inc.
Lighting Design

David Ghatan

Interface Multimedia
Visualization

Jeff Pulford
Manny Sanchez
John-Marc Labal

Arboricultural Specialist

Susan French

Charrette Agency
Consensus Building Institute
Engagement

Season Roberts
Merrick Hoben

**Cost Estimating for Memorial
Features**

Lorton Stone
Modular Trail Structures, LLC
Landscape Forms Inc.
Savoy Studios
Elmendorf Geurts
Georgia Fountain Company

Rhodeside Harwell / Larry Kirkland Studio

